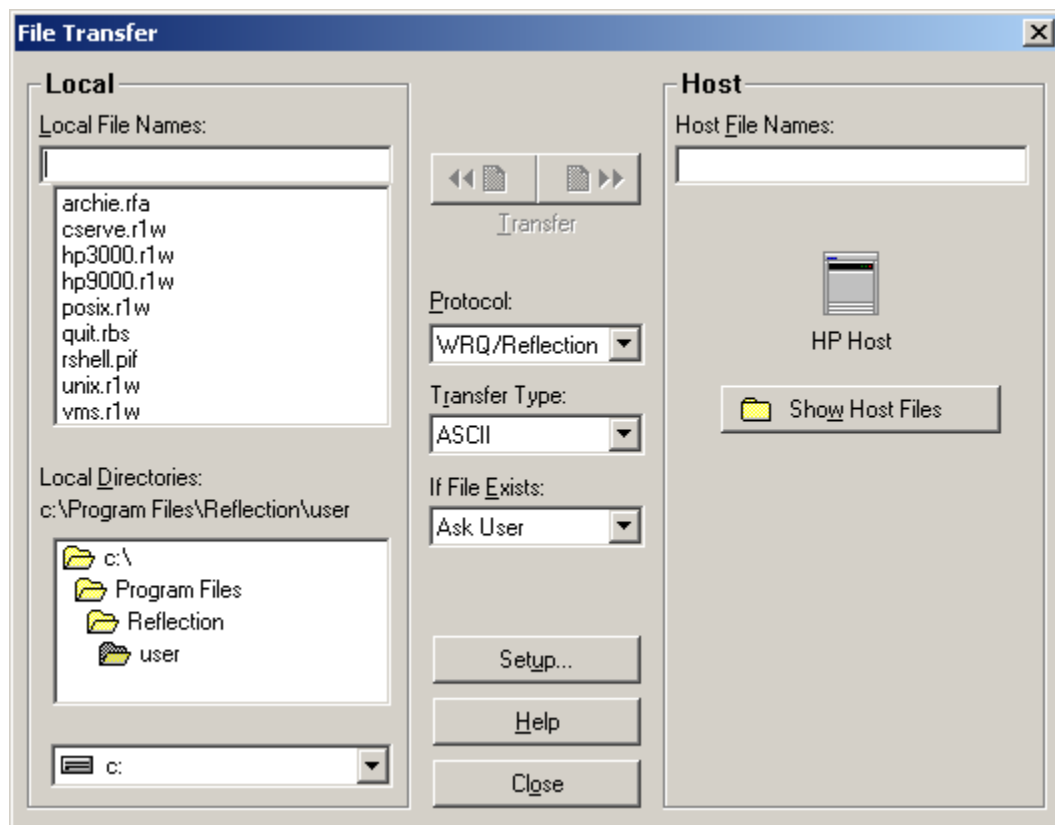


## Downloading Software From the Nobix Website and Uploading to an e3000

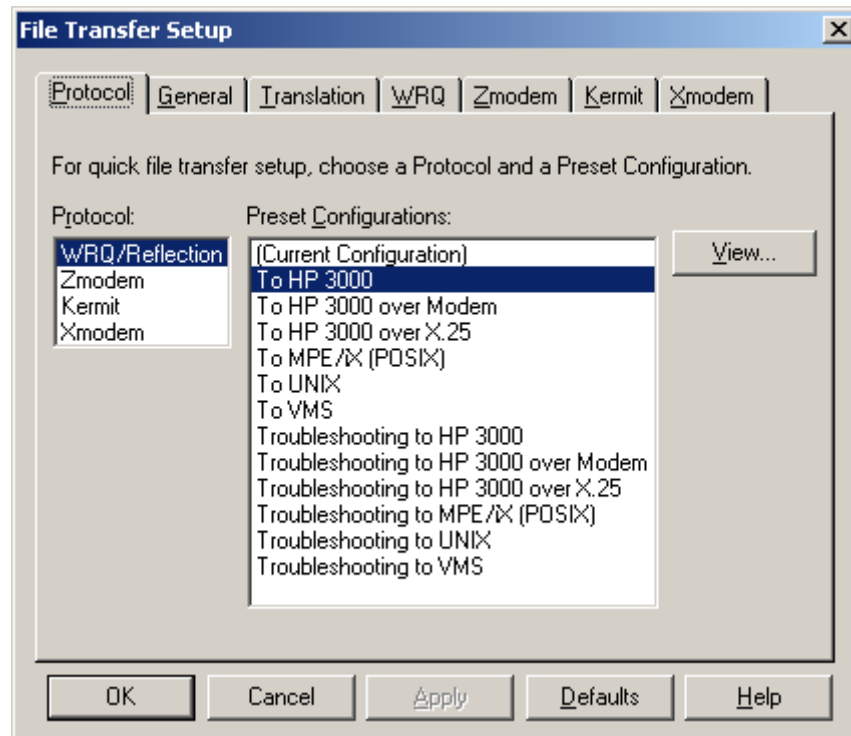
### Uploading via Reflections for Windows

To upload JobPak, JobRescue, JobQue and ElectroPage for Windows, do the following:

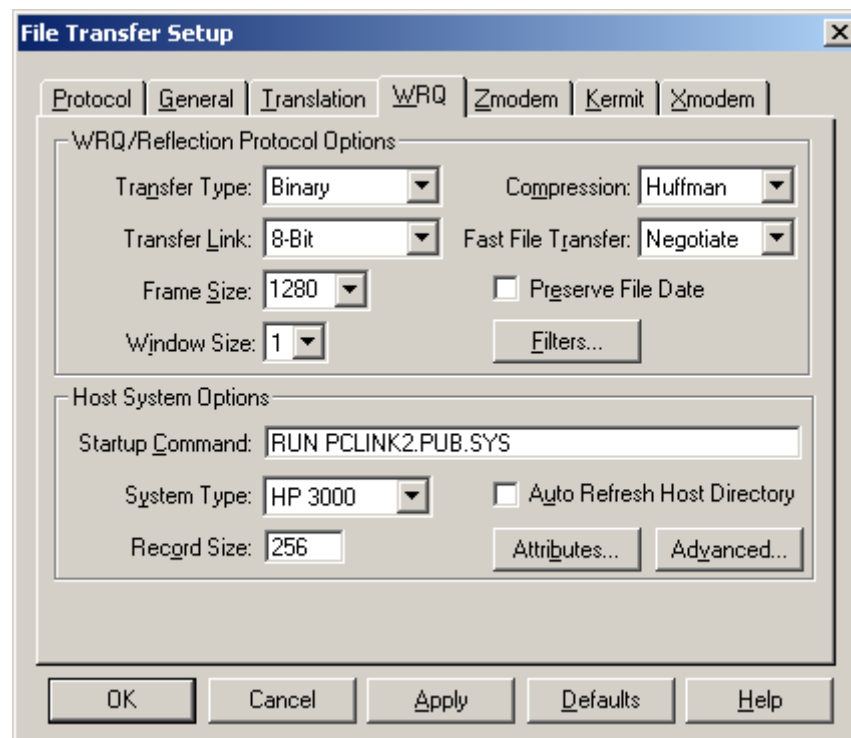
- 1 If you haven't done so already, select the software you want from the Download page on the Nobix website and download the file to your PC. Make a note of the name of the file downloaded and the directory on your PC where it was placed.
- 2 Log on to your e3000 via Reflections as MGR.NSD.
- 3 Select FILE from the menu bar and then select TRANSFER from the drop down list. The File Transfer dialog box will be displayed.



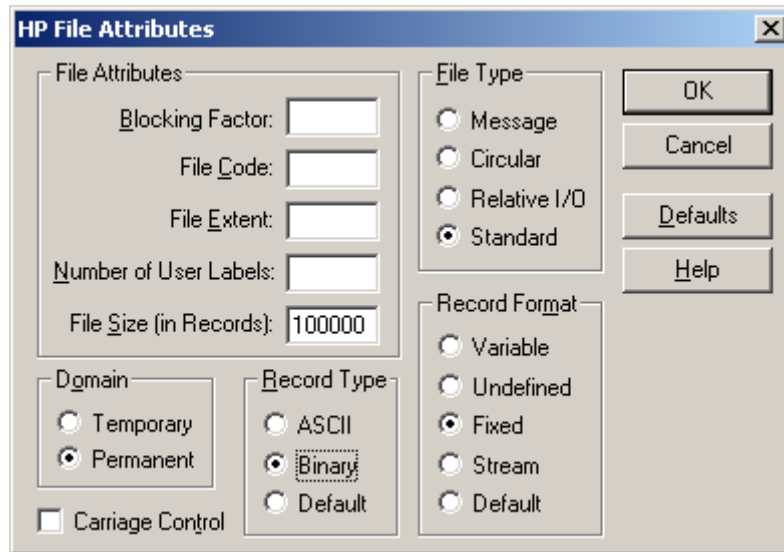
- 4 In the File Transfer dialog box, change the Transfer Type to BINARY. Make sure the Protocol is set to WRQ/Reflection.
- 5 Click on the Setup button in the File Transfer dialog box. The File Transfer Setup dialog box will be displayed.



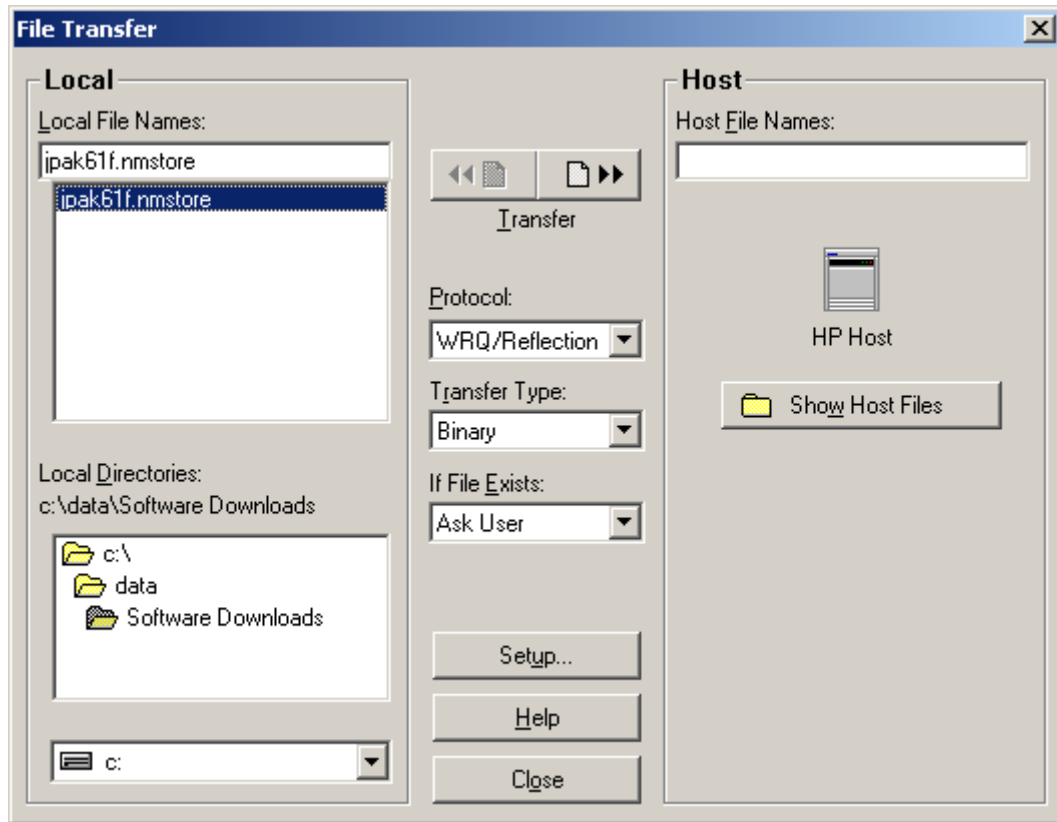
- 6 Click on the WRQ folder tab in the File Transfer Setup dialog box.
- 7 Under the Host System Options, change the Record Size to 256.



- 8 Click on the Attributes button. The HP File Attributes dialog box will be displayed.



- 9** Make the following setting changes in the HP File Attributes dialog box:
  - In the File Attributes frame, change the file size to a very large size such as: 100000. Leave all the other attributes blank.
  - In the Domain frame, select Permanent.
  - Do not check the Carriage Control box.
  - In the Record Type frame, select Binary.
  - In the File Type frame, select Standard.
  - In the Record Format frame, select Fixed.
- 10** After making the changes to the HP File Attributes dialog box, click the OK button to return to the File Transfer Setup dialog box. Then click the OK button to return to the File Transfer dialog box.



**11** Make sure the Transfer Type is still binary and the protocol is WRQ/Reflection.

**12** Locate the software download file on the Local side and highlight it.

For JobPak, JobRescue, JobQue and ElectroPage the file name will be JPak61F (where the 61F will reflect the version and server platform of the software).

**13** Click on the Transfer button to upload the file.

You should still be signed on as MGR.NSD on the e3000. The file uploaded is in a STORE format, you can now restore from it as if it was a tape using the following commands:

```
:FILE JPak61F;DEV=DISC
```

(Use the filename of the file you uploaded. It may not be "JPak61F" depending on what software you downloaded.)

```
:RESTORE *JPak61F;@.@@;SHOW;ACCT=NSD;CREATE
```

The software downloaded from the Nobix website is now uploaded to your e3000 server.

You are now ready to install the Nobix software. Please follow the installation instructions detailed in the appropriate *Installation and Update Guide* made available in the Documentation section of the Nobix website.

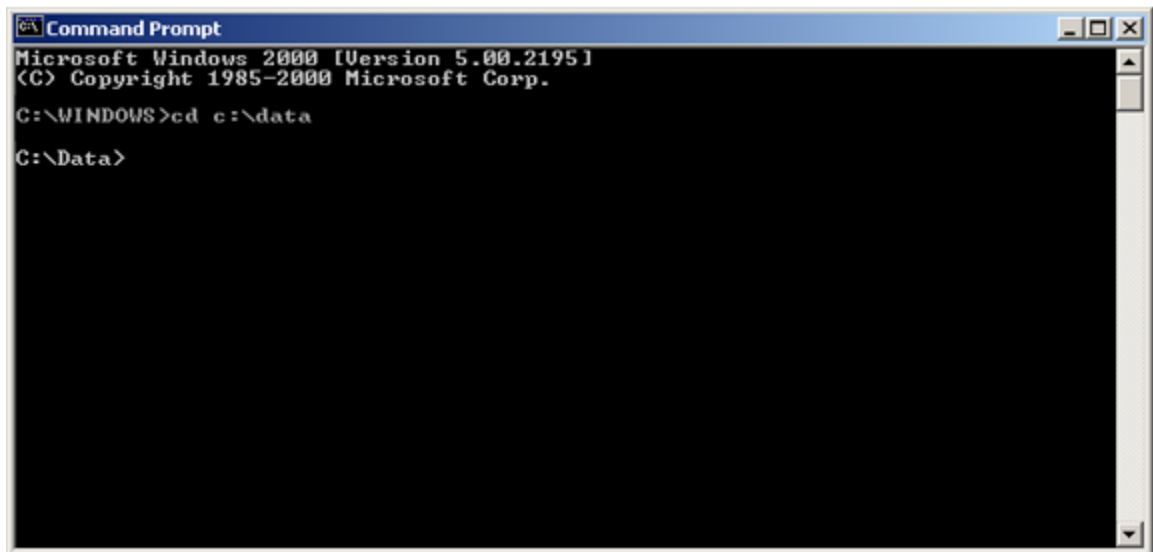
## Uploading via FTP

To upload JobPak, JobRescue, JobQue and ElectroPage for Windows, do the following:

- 1 If you haven't done so already, select the software you want from the Download page on the Nobix website and download the file to your PC. Make a note of the name of the file downloaded and the directory on your PC where it was placed.

If this is a first time installation, you will need to create the NSD account on the e3000 and logon before you proceed. You will find instructions on how to do this in the *JobPak Installation and Update Guide*.

- 2 Open an MS-DOS window.
- 3 Change directories to where you downloaded the file.



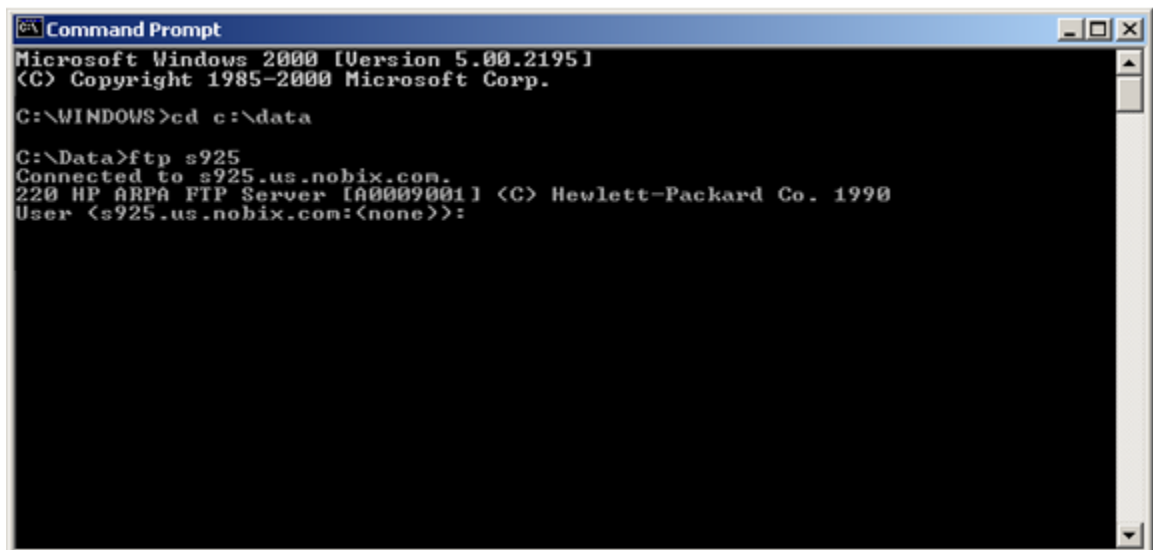
```
Microsoft Windows 2000 [Version 5.00.2195]
(C) Copyright 1985-2000 Microsoft Corp.

C:\WINDOWS>cd c:\data

C:\Data>
```

- 4 Connect to your e3000 using FTP. FTP must be running on your e3000 to accept the connection.

You should get a connection message and a user prompt:

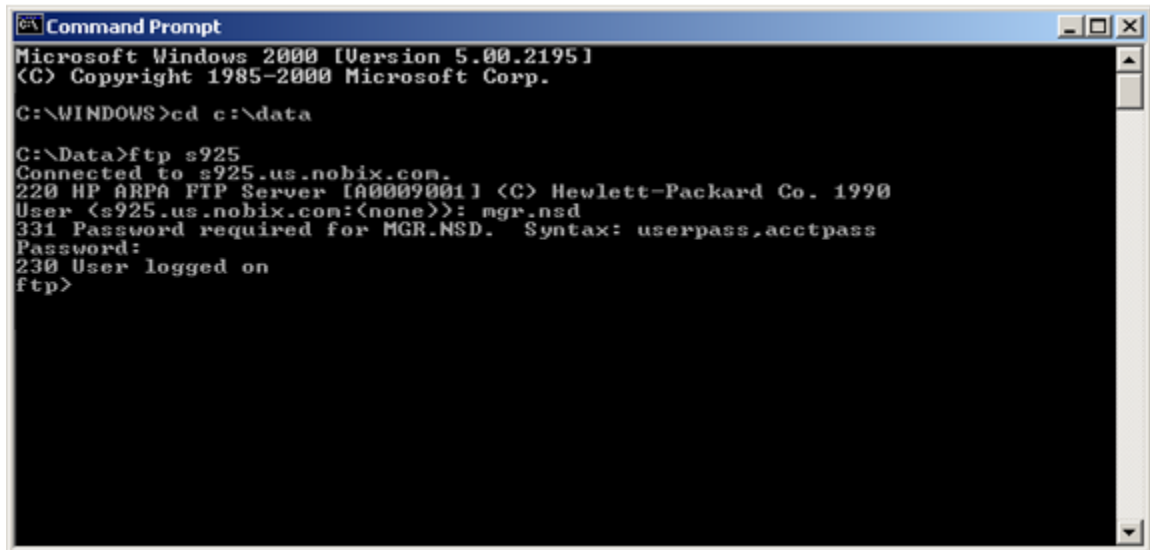


```
Microsoft Windows 2000 [Version 5.00.2195]
(C) Copyright 1985-2000 Microsoft Corp.

C:\WINDOWS>cd c:\data

C:\Data>ftp s925
Connected to s925.us.nobix.com.
220 HP ARPA FTP Server [A0009001] (C) Hewlett-Packard Co. 1990
User (s925.us.nobix.com:(none)):
```

- 5 Log on to your e3000. No Hello is required. No characters will be displayed when you enter your password(s).

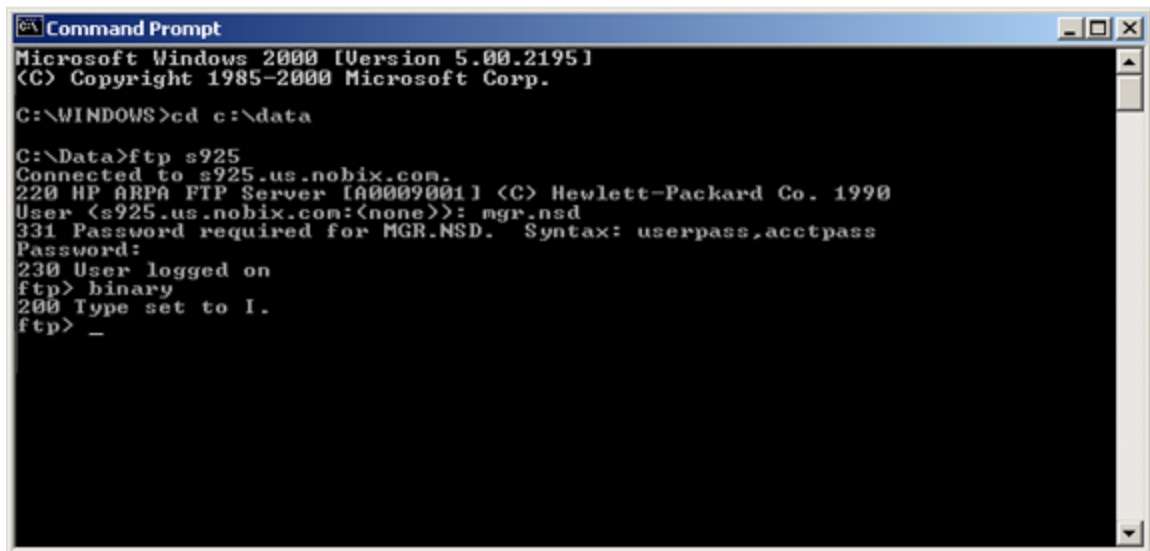


```
Microsoft Windows 2000 [Version 5.00.2195]
(C) Copyright 1985-2000 Microsoft Corp.

C:\WINDOWS>cd c:\data

C:\Data>ftp s925
Connected to s925.us.nobix.com.
220 HP ARPA FTP Server [A0009001] (C) Hewlett-Packard Co. 1990
User (s925.us.nobix.com:(none)): mgr.nsd
331 Password required for MGR.NSD. Syntax: userpass,acctpass
Password:
230 User logged on
ftp>
```

- 6 Enter binary mode by typing the word 'binary'.



```
Microsoft Windows 2000 [Version 5.00.2195]
(C) Copyright 1985-2000 Microsoft Corp.

C:\WINDOWS>cd c:\data

C:\Data>ftp s925
Connected to s925.us.nobix.com.
220 HP ARPA FTP Server [A0009001] (C) Hewlett-Packard Co. 1990
User (s925.us.nobix.com:(none)): mgr.nsd
331 Password required for MGR.NSD. Syntax: userpass,acctpass
Password:
230 User logged on
ftp> binary
200 Type set to I.
ftp> _
```

- 7 Use the put command to transfer the file to the e3000. You must qualify the command so the file arrives in the correct format. The command syntax is:

```
ftp> put jp61f jp61f;rec=128,1,f,binary
```

(Where the first "jp61f" is the filename of the file downloaded to the PC and the second "jp61f" is the filename for the file to be named on the e3000.)

Here is another example:

```
Microsoft Windows 2000 [Version 5.00.2195]
(C) Copyright 1985-2000 Microsoft Corp.

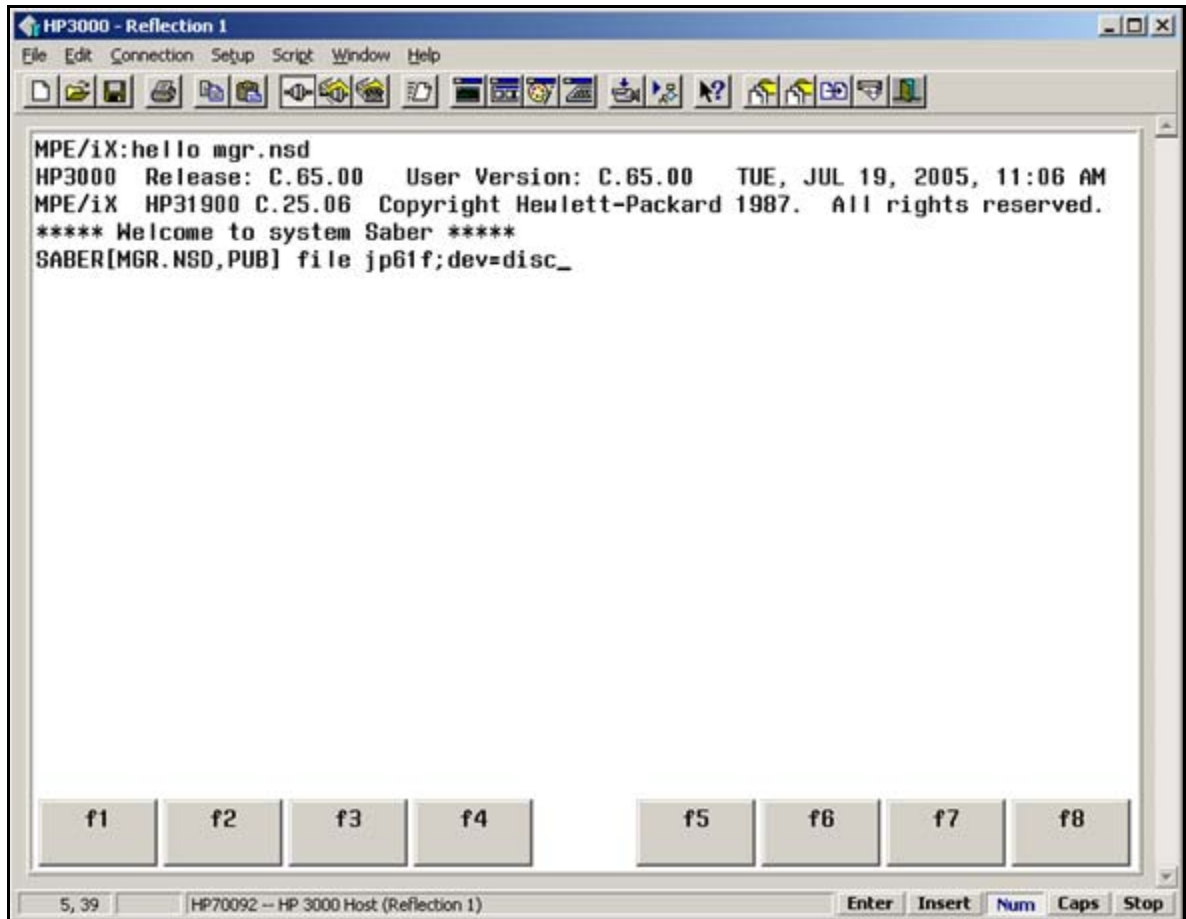
C:\WINDOWS>cd c:\data

C:\Data>ftp s925
Connected to s925.us.nobix.com.
220 HP ARPA FTP Server [A0009001] (C) Hewlett-Packard Co. 1990
User (s925.us.nobix.com:(none)): mgr.nsd
331 Password required for MGR.NSD. Syntax: userpass,acctpass
Password:
230 User logged on
ftp> binary
200 Type set to I.
ftp> put jp61f jp61f;rec=128,1,f,binary
200 PORT command ok.
150 File: jp61f;rec=128,1,f,binary opened; data connection will be opened
226 Transfer complete.
ftp: 9372672 bytes sent in 92.16Seconds 101.70Kbytes/sec.
ftp>
```

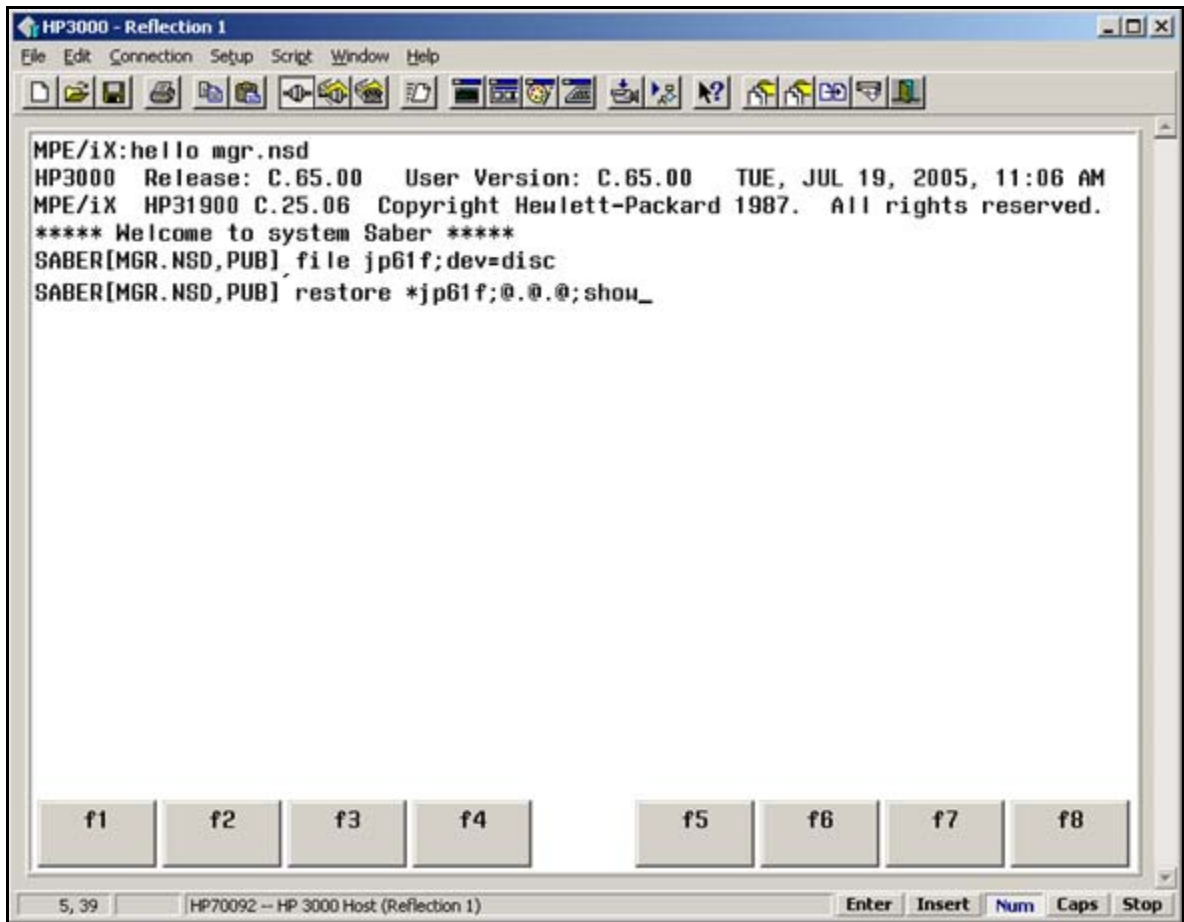
- 8 Once the file has transferred you can close your FTP window. Type 'quit' to close your FTP connection. Typing 'exit' will close the DOS window.
- 9 Sign on to the e3000 using the same sign-on you used when running FTP.

```
HP3000 - Reflection 1
File Edit Connection Setup Script Window Help
MPE/iX:hello mgr.nsd
HP3000 Release: C.65.00 User Version: C.65.00 TUE, JUL 19, 2005, 11:06 AM
MPE/iX HP31900 C.25.06 Copyright Hewlett-Packard 1987. All rights reserved.
***** Welcome to system Saber *****
SABER[MGR.NSD,PUB] _
```

**10** Enter a file equation for the restore.



**11** Enter the restore command:



**12** When the restore is complete please refer to the *JobPak Installation and Update Guide* for the remainder of the installation instructions.